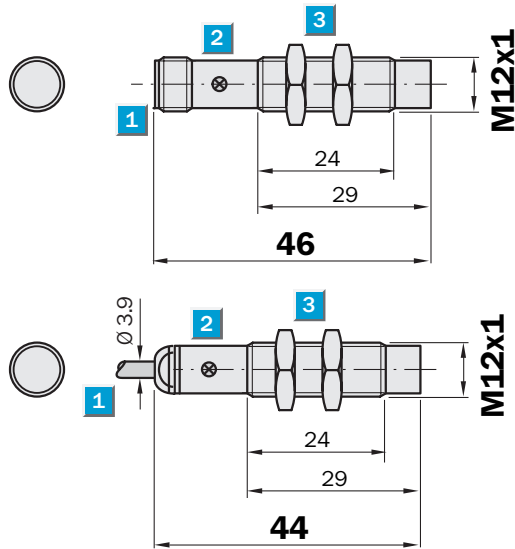


Sensing range
8 mm

Inductive sensor

- Enhanced sensing range
- Short-circuit protection (pulsed)
- Robust brass housing, nickel-plated with fine thread
- M12 x 1 mm
- Enclosure rating IP 67
- Installation non-flush

Dimensional drawing

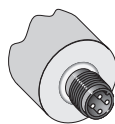


- 1 Connection
- 2 Display LED
- 3 Fastening nuts (2 x); width across 17, metal

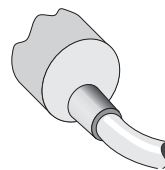
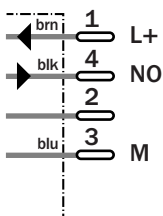


Connection type

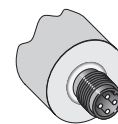
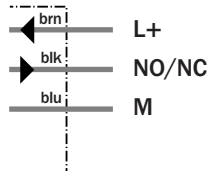
IME12-08NNSZCOK	IME12-08NNOZW2K	IME12-08NNOZCOK
IME12-08NPSZCOK	IME12-08NNSZW2K	IME12-08NPOZCOK
	IME12-08NPOZW2K	
	IME12-08NPSZW2K	



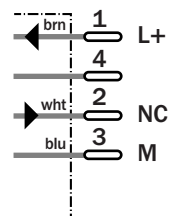
M12, 4-pin



3 x 0.25 mm²



M12, 4-pin



Accessories

Connector, M12, 4-pin

Mounting systems

Technical specifications		IME12-	08NNO ZCOK	08NNO ZW2K	08NNS ZCOK	08NNS ZW2K	08NPO ZCOK	08NPO ZW2K	08NPS ZCOK	08NPS ZW2K		
Sensing range S_n	8 mm											
Electrical configuration	DC3-wire											
Supply voltage V_s	DC 10 ... 30 V											
Ripple U_{pp}	≤ 10 %											
Voltage drop U_d	≤ 2 V ¹⁾											
Power consumption	≤ 10 mA ²⁾											
Continuous current I_a	≤ 200 mA											
Time delay before availability t_v	≤ 100 ms											
Hysteresis H, of s_r	5 ... 15 %											
Repeatability R	≤ 2 % (U_b and T_a constant) ³⁾											
Temperature drift, of s_r	± 10 %											
EMC	According to EN 60947-5-2											
Switching output	NPN											
	PNP											
Output function	Normally closed											
	Normally open											
Installation	Non-flush											
Connection type	Connector, M12, 4-pin											
	Cable, PVC, 2 m											
Enclosure rating	IP 67 ⁴⁾											
Max. switching frequency	2000 Hz											
Dimensions	M12 x 1 ⁵⁾											
Short-circuit protection	✓ ⁶⁾											
Reverse polarity protection	✓											
Power-up pulse suppression	✓											
Shock/vibration stress	30 g, 11 ms/10 ... 55 Hz, 1 mm											
Ambient temperature T_a	-25 °C ... +75 °C											
Housing material	Brass nickel-plated, plastic (PA6)											
Tightening torque	Typ. 12 Nm											
Approvals												
Protection class	<input type="checkbox"/>											
UL approval	cULus Listed											

¹⁾ At I_a max
²⁾ Without load

³⁾ Of s_{rr}
⁴⁾ According to EN 60529

⁵⁾ Thread diameter x pitch (mm)
⁶⁾ (Pulsed)

Reduction factor R_M

The following are reference values, which may vary from type to type:

St37 (Fe)	1
Stainless steel (V2A)	Approx. 0.8
Aluminum (solid)	Approx. 0.45
Copper (Cu)	Approx. 0.4

Ordering information

Type	Part Number
IME12-08NNOZCOK	1040791
IME12-08NNOZW2K	1040792
IME12-08NNSZCOK	1040787
IME12-08NNSZW2K	1040789
IME12-08NPOZCOK	1040783
IME12-08NPOZW2K	1040785
IME12-08NPSZCOK	1040779
IME12-08NPSZW2K	1040781